

MIDI Setup

Select MIDI IN and MIDI OUT ports PRO 3 is physically connected to. The status text should display: SEQUENTIAL PRO 3, ON-LINE. If not connected then manually check GLOBAL settings on the PRO 3.

For the PlugSE to communicate with the PRO 3, the Global SysEx (system exclusive) settings should be set as follows:

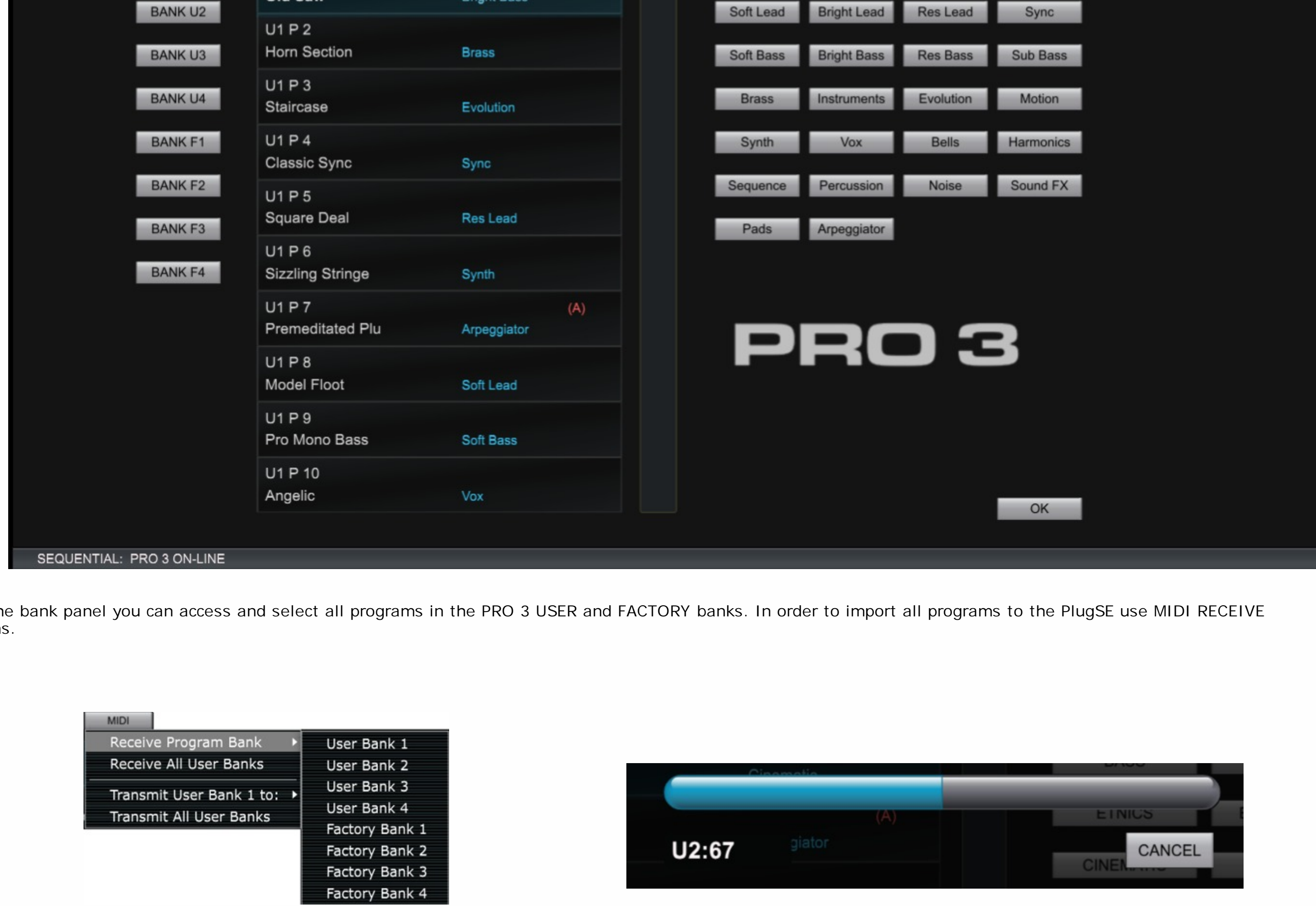
- MIDI SysEx Enable = ON
- MIDI SysEx Cable = USB or MIDI depending on connection
- MIDI Out Select = USB or MIDI depending on connection

The PlugSE controls more than a thousand parameters and is using NRPN commands that are received and transmitted. To enable NRPN controllers set:

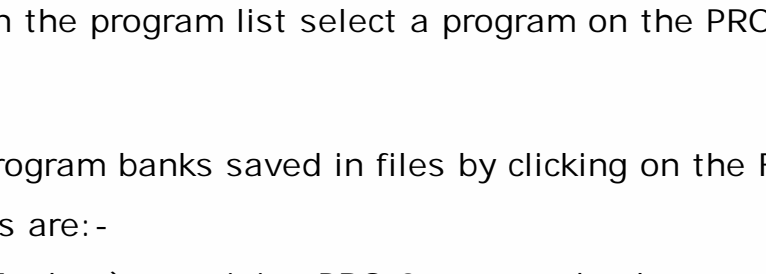
- MIDI Param Send = NRPN
- MIDI Param Receive = NRPN
- MIDI Control Enable = ON

Note: All of the above GLOBAL settings changes must be done manually on the PRO 3 panel. In order to save changes exit the Global mode.

PRO 3 Banks



Using the bank panel you can access and select all programs in the PRO 3 USER and FACTORY banks. In order to import all programs to the PlugSE use MIDI RECEIVE functions.



On the left of the Bank Panel there are BANK buttons that bring up a content of a selected bank. On the right side there are CATEGORY buttons that filter all USER programs according to a selected category.

Double-clicking on the program list select a program on the PRO 3 and closes the Banks Panel.

You can import Program banks saved in files by clicking on the FILE button. Supported formats are:-

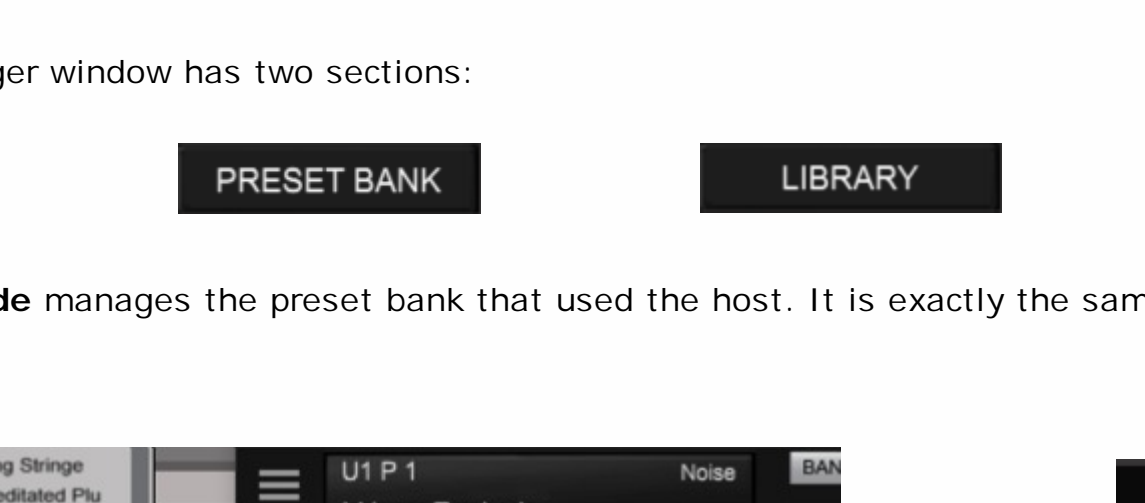
- *.sxx (Raw SysEx data) containing PRO 3 program banks.
- *.pro3b , PRO 3 Editor bank files.

Bank files are loaded to the currently selected bank. If you select different bank destination, click on a different bank button to select another current bank.

For a convenience, if you like to revert or reload the original factory programs you can use the PRESET button. Again, like with the bank files, selected factory banks will be loaded to the currently selected bank.

Preset Manager / Librarian

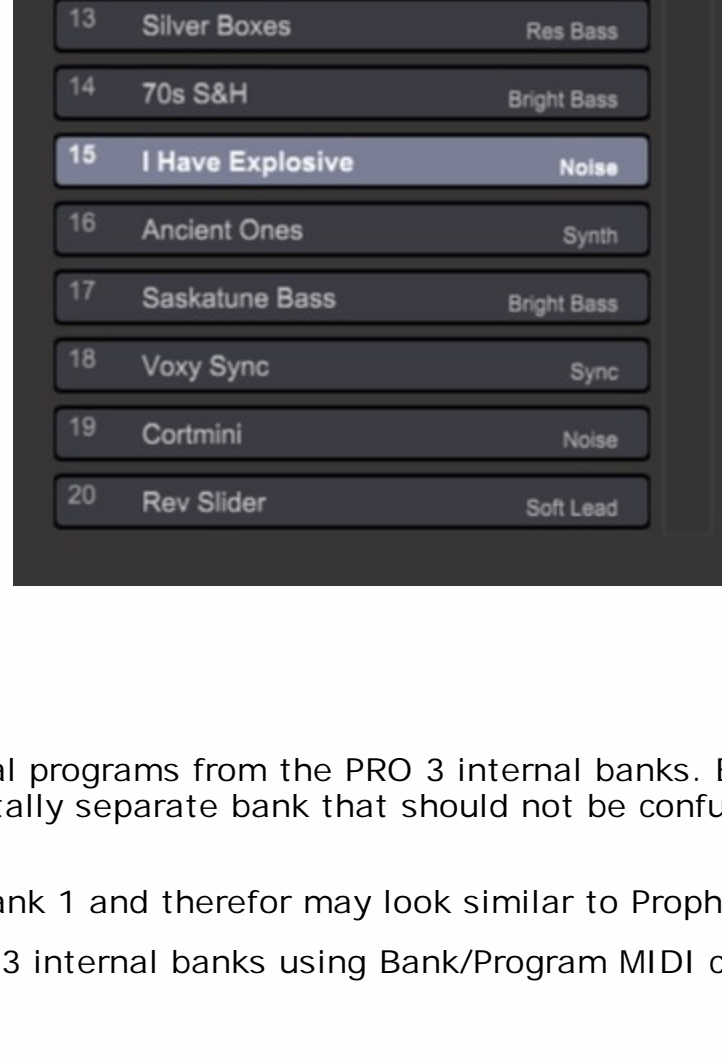
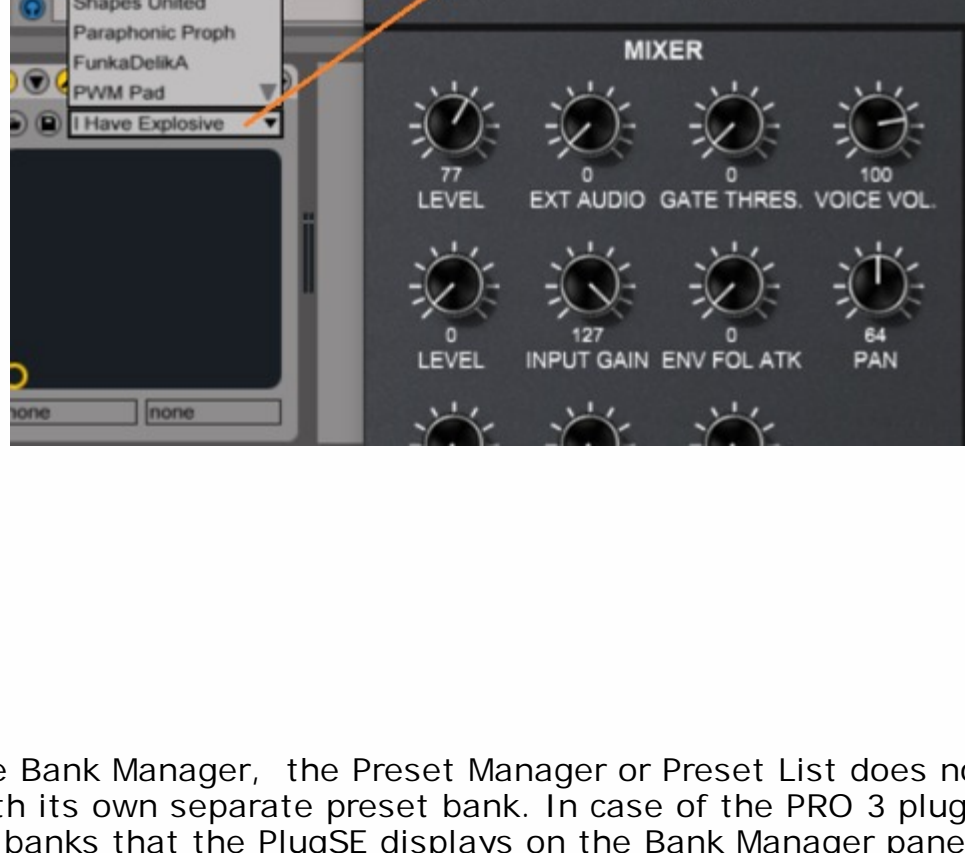
Preset Manager and Librarian can be accessed from the File Menu or by click in on the top-left corner.



The Preset Manager window has two sections:



Preset Bank Mode manages the preset bank that used the host. It is exactly the same list of presets that the VST/AU host displays for preset selection on a track.



Unlike the Bank Manager, the Preset Manager or Preset List does not select physical programs from the PRO 3 internal banks. Each VST or AU plug-in comes with its own separate preset bank. In case of the PRO 3 plug-ins this is a totally separate bank that should not be confused with PRO 3 USER or FACTORY banks that the PlugSE displays on the Bank Manager panel.

The PlugSE's preset bank comes preloaded with programs from the PRO 3 Factory Bank 1 and therefore may look similar to Prophet X internal bank.

When you select programs in the Bank Manager, you are selecting programs in PRO 3 internal banks using Bank/Program MIDI commands.

Selected programs are loaded from the internal banks to be played.

When you select preset programs using the Preset Manager or Preset List then selected preset programs are sent to the PRO 3 to be played. Preset programs loaded in that way temporarily replace programs in Prophet's so called Edit Buffer.

The Preset Program Bank data is saved within the VST/AU project and it is loaded bank when you open saved project.

Preset Manager Functions

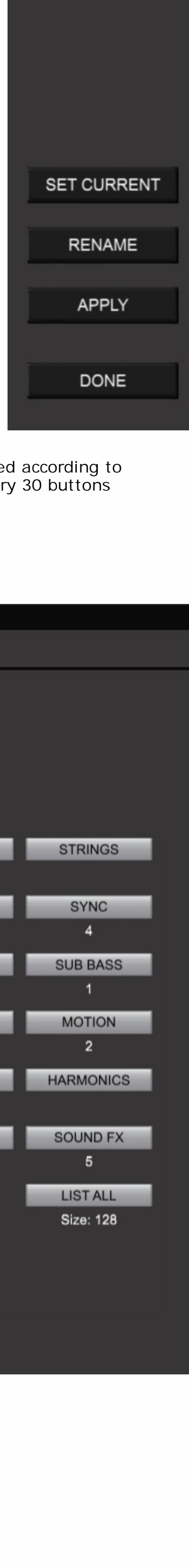
LOAD - You can either replace the whole Preset Bank or just load one program to it. To load just one program, first select destination location on the list.

SAVE - Saves the whole Preset Bank or selected single presets.

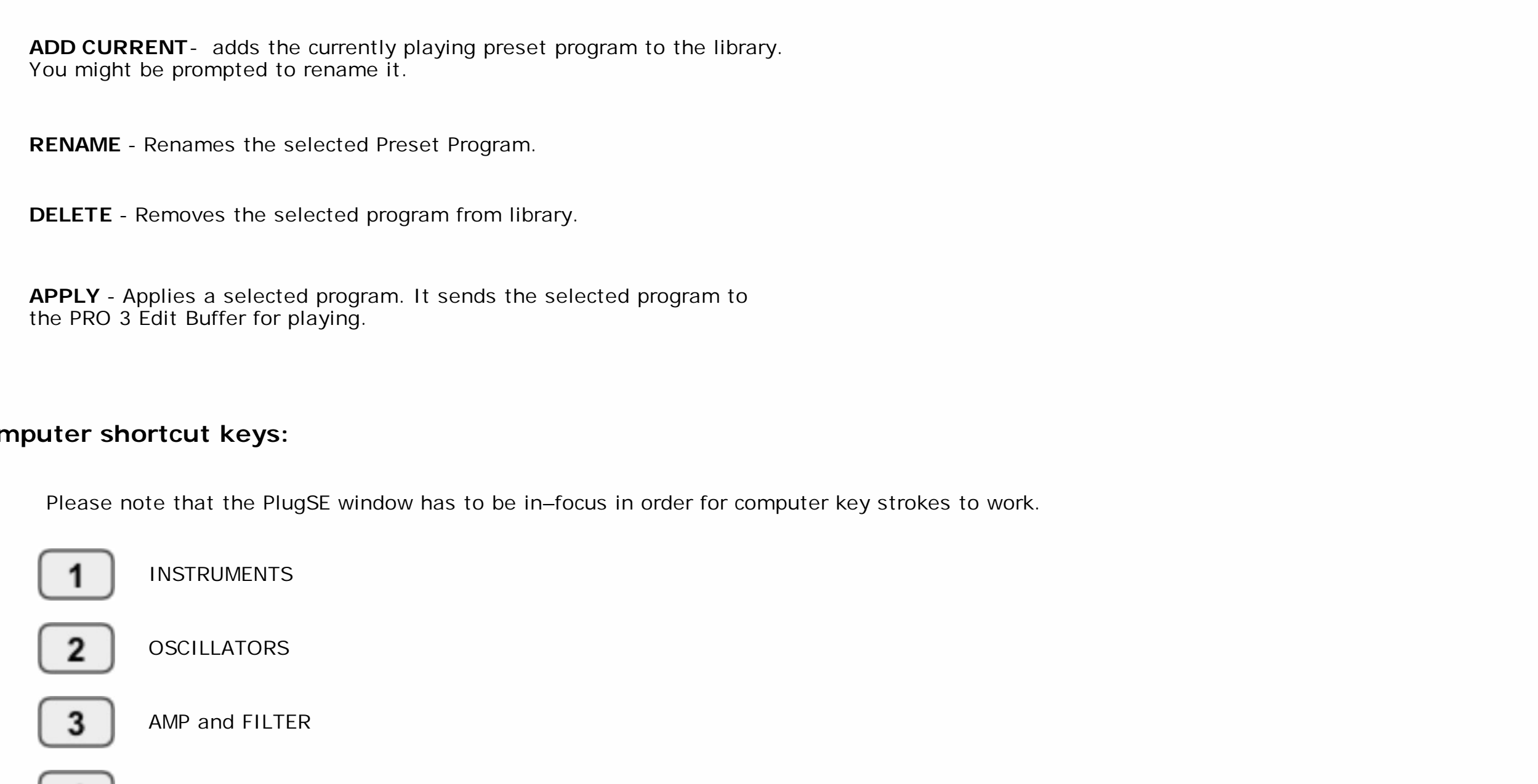
SET CURRENT - Inserts the currently playing preset program into the Preset Bank. Select a destination location on the list first.

RENAME - Renames the selected Preset Program.

APPLY - Applies a selected preset program. It selects the current preset location in the host preset bank and sends the selected program to the Prophet's Edit Buffer for playing.



Librarian Mode provides an easy access to PRO 3 librarian files where Prophet programs are organized and saved according to their assigned sound category. To switch to Librarian Mode click on the LIBRARY button. There are about category 30 buttons under each of the number of programs in that particular category is displayed.



Library Mode Functions

LOAD - There are several options here. You can import PRO 3 Library file that you prepared using the PRO 3 editor (*.pro3l file extension Format).

- *.sxx (Raw SysEx data) containing PRO 3 program banks.
- *.pro3b , PRO 3 Editor bank files.

You can also load programs from PRO 3 USER, FACTORY and ADD-ON Program banks.

SAVE - The program library is saved automatically on exit. You can also export it as a PRO 3 editor Library file (*.pro3l file extension Format).

CLEAR ALL - Deletes all programs from the library. You will be prompted to save it or cancel.

ADD CURRENT - Adds the currently playing preset program to the library. You might be prompted to rename it.

RENAME - Renames the selected Preset Program.

DELETE - Removes the selected program from library.

APPLY - Applies a selected program. It sends the selected program to the PRO 3 Edit Buffer for playing.

Computer shortcut keys:

Please note that the PlugSE window has to be in-focus in order for computer key strokes to work.

1 INSTRUMENTS

2 OSCILLATORS

3 AMP and FILTER

4 AUX ENVELOPES

5 EFFECTS

6 ARP and SEQUENCER

7 LFO

8 MODULATIONS

9 CONTROLS

O P Octave - Increase/Decrease

U I Note Velocity - Increase/Decrease

Computer Keys Note Play assignment:



F7 Arp Off / On

F8 Poly Sequencer Off / On